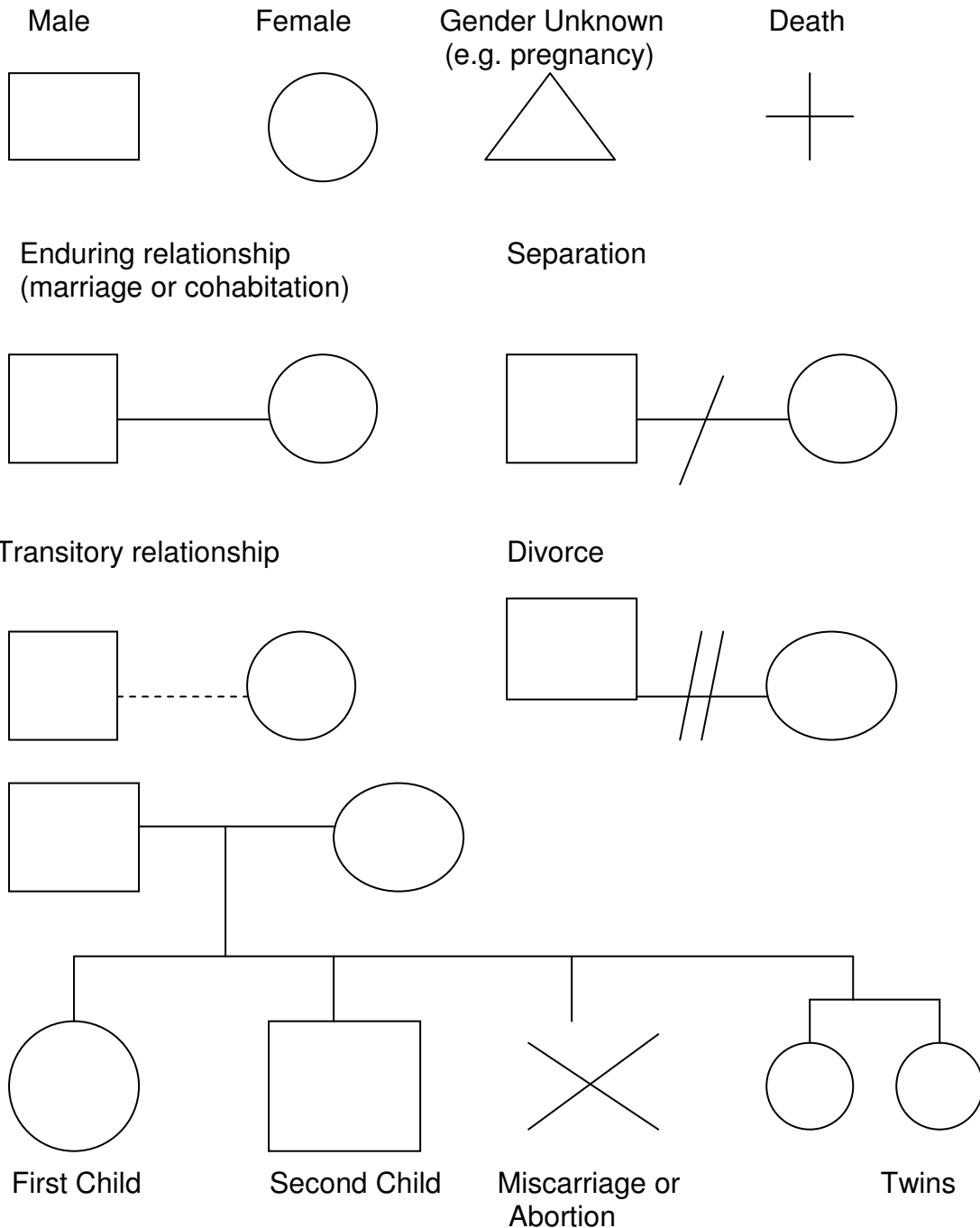


## Genogram (Generic Cases) Format

The following symbols should be used by staff to draw up a Genogram for generic cases only. Workers should use any additional guidance that their organisation uses.

### Genogram Symbols



A dotted line should be drawn around people who currently live in the same house.

### **Compiling a Genogram**

A Genogram or family tree covering three or more generations may be compiled using these symbols. Other relatives in addition to parents and children can be involved in compiling the genogram. More than one session may be needed if the exercise is used to discuss the family's history in detail and to enter significant dates and other information. Working on a genogram also provides the practitioner with an opportunity to observe family relationships, for example how open family members are with each other how well they respond to each other's needs, how flexible they are and how much they know about each other.

)