

Children's Services In Sunderland

Locality Based Integrated Working

A toolkit for Practitioners and Managers (inc. Schools) to develop integrated working to support outcomes for Children, Young People and their families.

Foreword

The Children Act 2004, Section 10 places a duty on statutory organisations through Children's Trust arrangements to develop integrated working.

This duty expresses the need to **improve child wellbeing, maximise resources and co-ordinate activities** to ensure **integrated planning, processes and front line delivery** are developed.

In Sunderland we already have strong working relationships and effective partnership arrangements in some areas of practice. These are evidently built on integrated working arrangements with a strong vision and agreed aims of what is required, that have resulted in the achievement of positive outcomes.

The benefits and opportunities that Locality Based Integrated Working (LBIW) can provide now need to be realised and developed in all areas of practice, whether this is through both co-location and a network of service partners working daily in localities or through specialist services delivering in localities when needs arise.

Sunderland has been successful in securing and providing preventative and early intervention programmes for a number of years; Children's Centres, Extended Services (in and around schools) and Targeted Youth Support. Building on the vision of 21st Century Schools these 3 programmes offer a vehicle to deliver a core offer of services for all Children, Young People 0 to 19 years (25 yrs SEN) and their families.

This toolkit (edition1) starts to identify a range of services that are currently available to support the Every Child Matters Outcomes, and how to access them. It also begins to identify the developments in Structure e.g. Governance arrangements, and Processes e.g. Common Assessment and Framework etc, that will develop and underpin integrated working.

Over time, through subsequent versions of the toolkit a continuum of support will be identified; from early intervention and preventative services to more specialist intensive provision if needs of families increase. It is expected that this support should also be accessed in reverse as needs dissipate, thereby sustaining outcomes.



Councillor Pat Smith
Portfolio Holder for Children and Learning City

Contents

Page no

4	Introduction
5	Children's Services Locality Areas – Figure 1
6	Locality Contacts
7	Developing Locality Based Integrated Working (LBIW)
8	Governance Arrangements for Locality Based Integrated Working
9	Governance Model – Figure 2
10	Locality Based and Integrated Teams
12	Key Contacts
13	Guide and Access to Services
84	Links to other useful websites

Introduction

This is the 1st edition of the toolkit to support an understanding and working knowledge of Locality Based Integrated Working (LBIW). It will be updated regularly as working arrangements i.e. structures, processes and working practice develop and progress is made. It is intended to develop alternative ways of producing the toolkit, particularly the “Guide to Services” section, to make it more accessible e.g. electronic versions.

LBIW will be developed across 5 locality areas (see map figure 1)

- North Locality
- East Locality
- West Locality
- Coalfields Locality
- Washington Locality

These localities have been agreed to support planning and reporting arrangements and are co-terminus with Sunderland City Council regeneration areas. This is expected to support identification of needs across a number of national (NI's) and local indicators to deliver differentiated support that local communities need.

It is recognised that effective working relationships already exist e.g. School cluster arrangements, and therefore locality boundary areas are not expected to hinder this work, but rather enhance working relationships with additional services. Services from across Health, Social Care, Education and Community sectors combining to support Achievement and Wellbeing, Social Inclusion, Community Identity and Service User participation and engagement.

Children's Services have produced 5 versions of this toolkit to represent the locality areas.

All five versions of the toolkit contain the same key information with alternative “Guide to Services” to reflect local service provision and contact details. All versions are available to anyone working across the City.

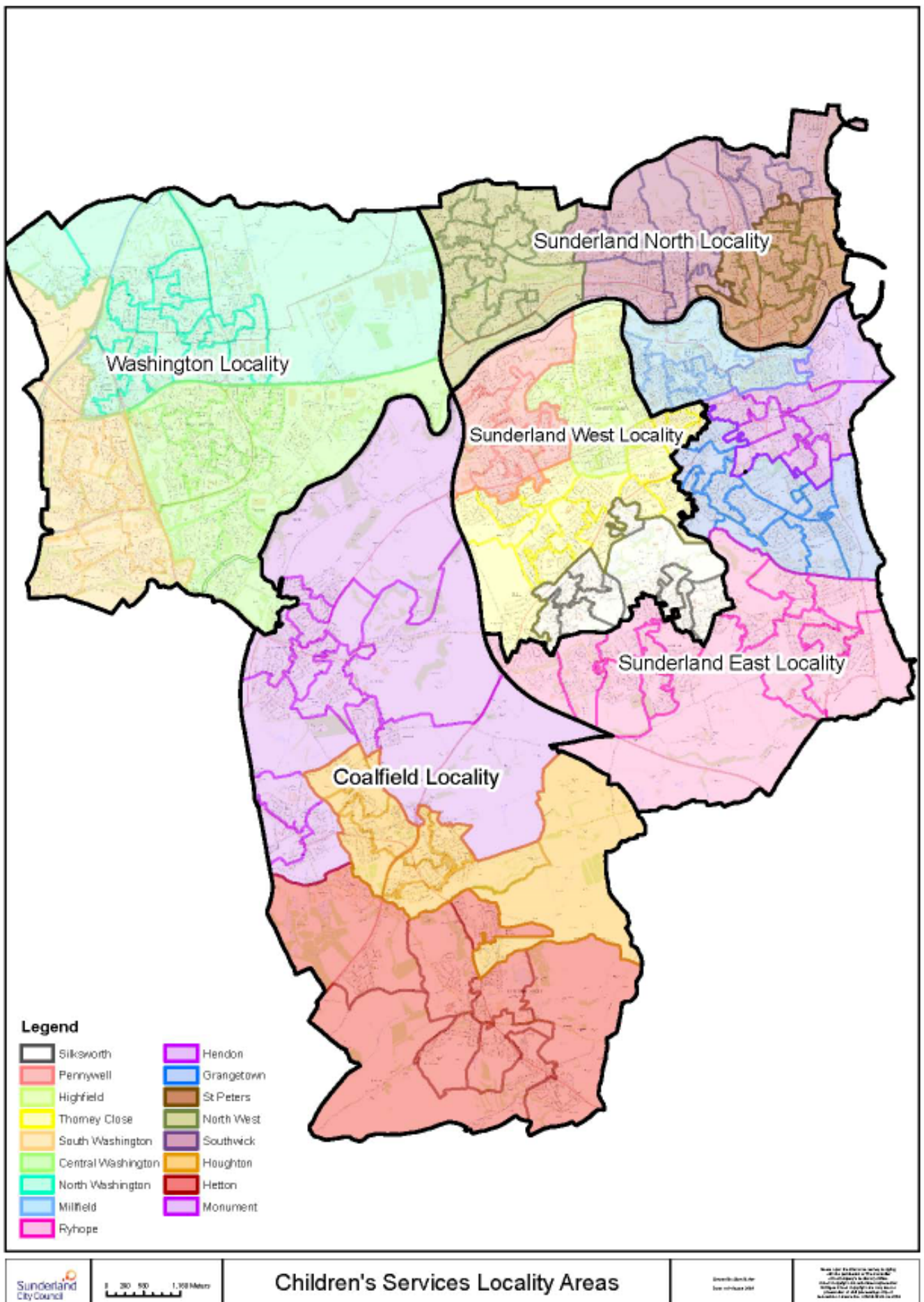
This first edition of the toolkit has 3 main aims.

- Provide information on Governance and programme development arrangements for integrated working
- Provide information on key services available to support Children, Young People and their Families
- Provide some clarity of how to engage and access services to support the needs you have identified through your assessments

Although the information in the “Guide to Services” is correct as of November 2009, it is not intended to be exhaustive and will be regularly updated and improved as more services become available and providers become co-located or join the network of services.

If you have any comments to make or any questions about the toolkit, LBIW arrangements or the services and access routes we would like to hear from you, as this helps us to improve both our communications and working relationships.

Figure 1 – Children’s Services Locality Areas



Locality Contacts

To support effective working across the City within localities we have 5 Locality Services Co-ordinators, one for each area. If you have any questions or need support with Locality Based Integrated Working please contact them directly.

Your locality contacts are:

Name	Title	Contact Details
Geraldine Marin	Locality Services Co-ordinator – Washington	Rainbow Family Centre 34 Elliot Terrace Concord Washington NE38 0LN Tel: 0191 2193262 Mobile: 07765 610166
Gill Wake	Locality Services Co-ordinator – Coalfields	Hetton School North Road Hetton let Hole DH5 9JZ Please contact Central Business Support on 0191 219 3431
Kevin Knapp	Locality Services Co-ordinator – North	Monkwearmouth School Torver Crescent Sunderland SR6 8LG Tel: 0191 5535555 ext 219 Mobile: 07968 390315
Marie Roberts	Locality Services Co-ordinator – West	Farrington Community School Sports College Allendale Road Sunderland SR3 3EL Mobile: 07717 881607
Jane Moran	Locality Services Co-ordinator – East	Hendon Health Centre The Place Hendon Sunderland SR1 2LR Mobile: 07827 348587

Developing Locality Based Integrated Working (LBIW) – Programme Development

A project board has been established to develop Sunderland's approach to LBIW to ensure significant progress is made in the coming year by:

- Establishing the levels and degrees of integration the Children's Trust needs to consider, to best support Children, Young People and Families differentiated needs.
- Developing working arrangements, where appropriate, with other key thematic partnership boards to avoid duplication of work and to maximise resources.
- Ensuring the effective implementation of an agreed operating model for the Common Assessment Framework to support identified needs, promote outcomes and maximise impact of services
- Identifying training and continuing professional development opportunities to support all practitioners across agencies with skills and knowledge needed to work in an integrated framework

This project board will work on behalf of a new Citywide Management Board for LBIW prior to it being established to develop the LBIW programme, (see figure 2)

LBIW Project Board Membership:

Name	Designation	Role in LBIW Programme
Keith Moore	Deputy Executive Director of Children's Services	Project Executive and Chair
Sandra Mitchell	Head of Service - Performance and Planning	Project Director
Val Thompson	School Place Planning Manager	Project Manager
Judith Hay	Head of Service – Positive Contribution and Economic Wellbeing	Board Member
Lynda Brown	Head of Service – Standards and Quality	Board Member
Meg Boustead	Head of Service - Safeguarding	Board Member
Marc Hopkinson	Health Improvement Lead	Board Member
Kath Butchert	Youth Development Manager	Interim Board Member
Dave Thornton	Headteacher – Farringdon Community School Sports College (Schools Representative)	Interim Board Member
Sarah Nordstrom	Headteacher – Easington Lane Primary School (Primary School Representative)	Board Member

Governance Arrangements for Locality Based Integrated Working

Figure 2 illustrates the Governance model to support the development of Sunderland's LBIW arrangements.

A Locality Steering Group (LSG) will be established in each of the 5 localities in May 2010. This is intended to support specific needs of each locality, as well as ensuring positive outcomes for individual children, young people and their families.

Locality Based Integrated Working (LBIW) remit of groups:

Citywide Management Board for LBIW

Develop and Implement Sunderland's Approach to LBIW by:

- Establishing the levels and degrees of integration for the Children's Trust
- Developing working arrangements, where appropriate, with other key thematic partnership boards to avoid duplication of work and to maximise resources
- Ensuring the effective implementation of an agreed operating model for the Common Assessment Framework to support identified needs, promote outcomes and maximise impact of services
- Identifying training and continuing professional development opportunities to support all practitioners across agencies with skills and knowledge needed to work in an integrated framework

Locality Steering Groups (LSG)

Consider how local service delivery is meeting the needs of children, young people and their families generally, with a specific focus on:

- Monitoring outcomes for individual children and young people
- Engagement of services in LBIW arrangements and specifically the Common Assessment Framework
- Identification of local needs and service capacity to inform future commissioning arrangements
- Local performance targets to deliver City priorities and National Indicators

Locality CAF panels

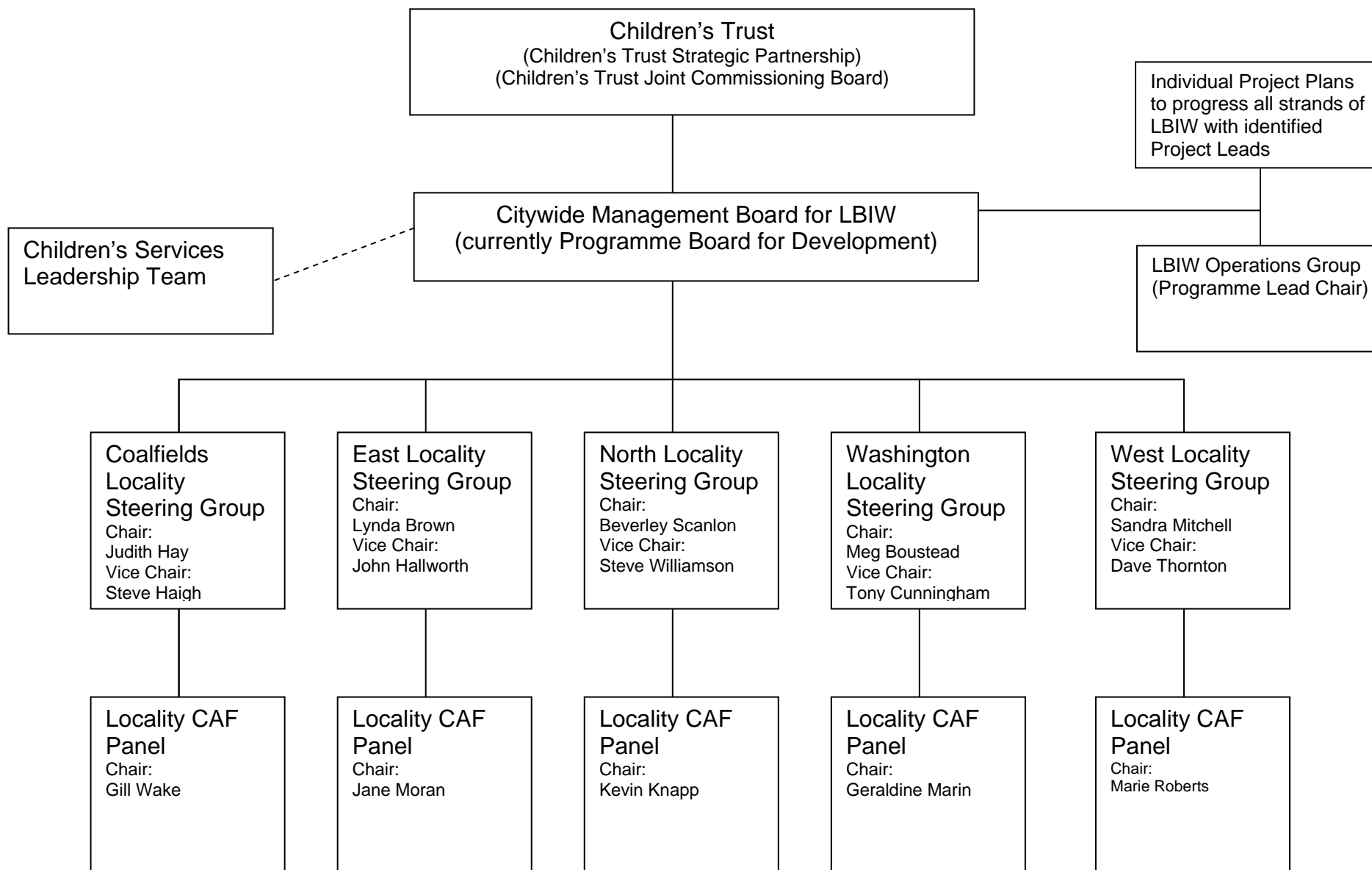
- Support the allocation of services to identified needs for individual children and young people
- Monitor and review progress of multi-agency packages of support

LBIW Operations group

Support the operational delivery of the LBIW Transformation Programme through multi-agency co-operation, planning and implementation:

- Support partner agencies to fulfil their statutory duty to develop integrated working, including CAF
- Engage sector organisations in workforce development for LBIW
- Reporting to the LBIW Board with recommendations for the successful development of LBIW
- Support individual projects through agency representatives as required

Locality Based Integrated Working Governance Structure



Locality Based and Integrated Teams

Some integrated teams are already established and operate across the city to support either specific age ranges of children or specific identified needs e.g. Children's Centres 0 to 5 years and Youth Offending Service.

Locality Based Integrated Working in Sunderland will build on the principle and practice that individual host organisations deploy their resources where possible to be co-located, or deliver in the 5 identified locality areas in a co-ordinated model of delivery.

These services are expected to maximise the effectiveness of their provision at a universal level by accessing training and local networking opportunities to share experience and skills, as well as develop a working knowledge of other services to work more effectively together in local neighbourhoods.

Where children's additional needs are identified then these should be supported through an agreed operating model that makes use of a common assessment and Common Assessment Framework (CAF).

This approach supports individual agencies including schools, to benefit from the expertise of many staff across the spectrum of needs and develops knowledge and experience to make more effective assessments and judgements. It also provides the opportunity for swift and easier access to services, increases knowledge of what is available and reduces the potential for duplication of provision and waste of finite resources.

The services currently working within the City, co-located or working through locality bases are:

Service	Location
School Attendance Service	All Secondary Schools and Academies
Health Visiting	Children's Centres
Early Years Mental Health Service	Children's Centres
Child and Family Support Service	Children's Centres
Family Support Service	Children's Centres
Community Paediatrics	Children's Centres

Play and Family Learning Service (0 to 5 years)	Children's Centres
Midwifery Services	Children's Centres
Anti natal and post natal Smoking Cessation	Children's Centres
Connexions Service – Information Advice and Guidance	All Secondary Schools and Academies
Youth Offending Prevention Service	Currently moving into Locality Bases
Youth Drug and Alcohol Prevention	Currently moving into Locality Bases
Youth Sexual Health Service	Currently moving into Locality Bases
Youth Challenge and Support Service	Currently moving into Locality Bases
Local Families Information Service	Children's Centres – Access to information of services for Children and Young People 0 to 19 years

Key Contacts

Alongside the Locality Services Co-ordinators detailed on page 7 there are key contacts that can support you with information and advice on the 3 main prevention programmes within the City.

Key Contacts in Localities for Children’s Centres, Extended Services and Targeted Youth Support (East Locality)

Link to Services	Named Contact	Contact Details
Co-ordination of local Services	Jane Moran Locality Services Co-ordinator	Hendon Health Centre The Place Hendon Sunderland SR1 2LR Mobile: 07827 348587
Children’s Centres	Jackie Royce Area Co-ordinator	Portland College Specialist School for Cognition & Learning Weymouth Road Chapelgarth Sunderland SR3 2NQ Tel: 0191 5538810
Extended Services in and Around Schools	Sharon Smith Extended Schools Cluster Co-ordinator	Portland College Specialist School for Cognition & Learning Weymouth Road Chapelgarth Sunderland SR3 2NQ Tel: 0191 5538810
Targeted Youth Support	Paul Nicol	City Library Building 30-32 Fawcett Street Sunderland SR1 1RE Tel: 0191 4432929

Over the coming months and year a number of other services will move into localities and will become co-located or operate within a network of services through agreed operating structures and processes.

Guide and access to Services

The guide to services within the toolkit is designed to offer a menu of services currently available within the City of Sunderland and the means by which they can be accessed. A contents page is included to assist in the search for a particular service or intervention to support a particular need. Each entry includes a brief description of what is offered, a contact for further information, an access route and whether there is a cost implication. This is not an exhaustive list and further contributions will be included in subsequent publications of this directory.

Please note that if you require 2 or more services you must in the first instance consider completing a Common Assessment (CAF) which may lead to a multi agency “Team Around the Child / Family” meeting through the Common Assessment process.

Subsequent copies of the toolkit will identify how you will be able to make best use of the CAF and the support available to maximise its use to support the Children, Young People and Families you are working with.

For further information on the Common Assessment Framework contact Jane Moran (Locality Services Co-ordinator) on 07827 348587 or email jane.moran@sunderland.gov.uk

Directory of Services Contents (East Locality)

Index	Service Name	Age range	Page no
Anti-social behaviour	Challenge and Support team	0-25	18
	Crime Family Intervention Project (Crime FIP)	Families with a child at least 10+	18
	Family Intervention Project	0-18 and families	18
	Positive Futures	8-19	19
	Tackle-it anti bullying	9-10	19
	Wear Kids	5-17	20
Attendance	Attendance (development)	5-16	20-23
	Attendance (enforcement)	5-16	24
Behaviour Support	Behaviour Intervention Team (Key stage 2)	KS2 – KS3	25-27
	Behaviour Support (Key stage 3-4)	11-16	28
	Nursery and Key Stage 1 Behaviour Team	3-7	29
Childcare	Family Information Service (FIS)	0-14	30-31
	Childcare for 0-14 years (0-18 for children with disabilities)	0-14 (0-18 for children with disabilities)	32-33
	Childcare to support short-term crisis	0-5 (0-18 for children with disabilities)	34
	Children's Centres Childcare	0-5 (0-18 for children with disabilities)	35
Connexions	Connexions Personal Advisers	13-19 (25 special needs)	36-39
Early Learning	Children's Centres Early Learning	0-5	40-41

Educational Psychology	Educational Psychology	0-19	42-52
Extended Services	Playing for Success	9-13	52
	Extended Schools Cluster Co-ordination	5-19	53-54
	Lettings Information	N/A	54
	Risk Management & Insurance guidance, support and advice	N/A	54
Family Support	Child and Family Support Service	0-12	55
Health	Children's Centre Health Visiting Services	0-5	55
	Community Paediatrician	0-5	56
	Fit for Footy	8-16	57
	School Nursing Service	5-16	57
	Programmes for overweight and obese children	5-11	57
	Programmes to promote healthy eating and lifestyles	5-16	58
	Healthy Schools	5-16	58
Housing	Diversionary Activities	13-19	59
	STEPS	16-21	59
	Various programmes with Local Schools	8-19	60
	Victim Support Service	All	60
	Young Person's Involvement Group	Up to 25	60-61
Learning Support	Final Score	9-13	62
	Learning through football	6-11	62
	Write on target	10-11	62

Mental Health	ADHD Support	Adults	62
	ADHD Team	0-16	63
	Barnes Unit	16-18	63
	CCAMHS Telephone Consultation and Advice	For practitioners relating to 0-18	63
	CCAMHS Incredible Years	5-11 and adults	64
	Child and Family Department	Up to 16	64
	Children's Centre Early Years Mental Health Service	0-5	65
	Community CAMHS	Up to 18	65
	Community CAMHS Counselling Service	5-18	65
	Counselling Service	18+	66
	Deliberate Self Harm Team	Up to 18	66
	Looked After Children	Up to 18 and adults	66-67
	Support Group	Adults	67
Training	For practitioners relating to 0-18	67	
Parenting	Family Learning	5-14 and parents	68
	Parenting Programmes	0-16	68
Parenting and Family Support	B2B (Bump to baby)	School age parents up to 20 years old	69
	Children's Centre Family Support Service	0-12	70
Police	Sunderland North Neighbourhood Policing Team	All ages	71
Safeguarding	Domestic Violence	0-19	72-73
	Education Safeguarding Team	0-19	74
	Kaleidoscope	Up to 18	75

	Out of hours emergency safeguarding service	0-18	75
Special Educational Needs	Accessibility and Disability Equality Duty	2-19	75
	Home and hospital tuition	5-16	76
	Home to school transport	2-19	76
	Parent Partnership Service	0-19	76
	Returns Unit	11-16	77
	Statutory assessment of SEN	2-19	77
Special Needs	Deaf Friendly Coaching Programme	6-16	77
	Football leagues and tournaments	11-16	78
	Sign language programme	0-19	78
	Sports programmes	4-18	79
Sports Programmes	Football development	3-16	80
	KICKZ	13-16	81
	Playing for Success	9-13	81
Substance Misuse	Youth Drug and Alcohol Project	4-25	82
Young Carers	Young carers advice	4-25	82
Youth Services	Youth Services, activities and youth clubs	4-25	83

INDEX	SERVICE NAME	LEAD AGENT	AGE RANGE	WHAT IT DOES	CURRENT ACCESS ROUTE	CONTACT	LOCATION OF CONTACT PERSON AND / OR SERVICE
Anti-social behaviour	Challenge and Support Team	Youth Offending Service (Children's Services, Sunderland City Council)	0-25	Intensive support intervention for young people and families to address underlying issues surrounding their anti-social behaviour	Common Assessment Framework	Jack Saward Prevention Manager Tel 0191 5663114 Email: Jack.Saward@sunderland.gov.uk	Lambton House 145 High Street West SR3 1UW
Anti-social behaviour	Crime - Family Intervention Project (Crime FIP)	Youth Offending Service (Children's Services, Sunderland City Council)	Families with a child at least 10+	Offers intensive support to a small number of vulnerable families with complex needs and where Children and Young People are at high risk of offending. The project works holistically with the family where there is entrenched offending behaviour within the home	Consultation via telephone	Amelia Adey Tel 0191 5663000 Email: Amelia.Aidey@sunderland.gov.uk	St Cuthbert's House East Cross Street Sunderland SR1 1XB
Anti-social behaviour	Family Intervention Project (FIP)	DISC (Developing initiatives supporting communities)	0-18 and families	Provides a means of working with challenging and anti-social families in local communities	Consultation via telephone	Lisa Grudgings Senior Practitioner Tel: 0191 5642145	Independent Living Unit Unit 9 Bridge House Sunderland SR1 1TE

INDEX	SERVICE NAME	LEAD AGENT	AGE RANGE	WHAT IT DOES	CURRENT ACCESS ROUTE	CONTACT	LOCATION OF CONTACT PERSON AND / OR SERVICE
Anti-social behaviour	Positive Futures	Community & Cultural Services Sunderland City Council	8-19	Offers a programme of sporting activities to reduce anti-social behaviour, crime and drug misuse. Also includes summer activities for 8-11's	Consultation via telephone	Andrea Baldwin Tel: 0191 5614572 Email: Andrea.Baldwin@sunderland.gov.uk	South Hylton House Unit 1 Hylton Bank Sunderland SR4 0LJ
Anti-social behaviour	Tackle It - Anti-bullying	SAFC Foundation	9-10	Develops an understanding of what contributes to bullying behaviour and how to address it. Delivered over 6 weeks - 1hr per week. Each primary in the City is offered a 6 week course through the school year for their year 5 pupils, covering Anti Bullying and Anti-Social behaviour.	Consultation via telephone	Graham Irving Tel: 0191 5515185	Stadium of Light Sunderland SR5 1SU

INDEX	SERVICE NAME	LEAD AGENT	AGE RANGE	WHAT IT DOES	CURRENT ACCESS ROUTE	CONTACT	LOCATION OF CONTACT PERSON AND / OR SERVICE
Anti-social behaviour	Wear Kids	Youth Offending Service (Children's Services, Sunderland City Council)	5-17	Support and intervention to prevent anti-social behaviour in children and young people * Assessment * Support strategies * Individual work * Family work *Joint work with other services	Common Assessment Framework	Jack Seward Prevention Manager wearkids@sunderland.gov.uk Tel 0191 5663114 Email: Jack.Seward@sunderland.gov.uk	Lambton House 145 High Street West SR3 1UW
Attendance	Attendance Team (Development)	Extended Services and Attendance Group Children's Services Sunderland City Council	5-16	Support for children, young people, their families and schools to improve attendance and reduce persistent absence	Consultation via telephone	Christine Parker Attendance Development Officer (ADO) Tel: 0191 5537605 Email: Christine.Parker@sunderland.gov.uk	Southmoor Community School (Mathematics & Computing College) Ryhope Road Sunderland SR2 7TF

INDEX	SERVICE NAME	LEAD AGENT	AGE RANGE	WHAT IT DOES	CURRENT ACCESS ROUTE	CONTACT	LOCATION OF CONTACT PERSON AND / OR SERVICE
Attendance	Attendance Team (Development)	Extended Services and Attendance Group Children's Services Sunderland City Council	5-16	Support for children, young people, their families and schools to improve attendance and reduce persistent absence	Consultation via telephone	Rachel Thomas Attendance Development Officer (ADO) Tel: 0191 5537741 Email: Rachel.thomas@sunderland.gov.uk	Thornhill School Business & Enterprise College Thornholme Road Sunderland SR2 7NA
Attendance	Attendance Team (Development)	Extended Services and Attendance Group Children's Services Sunderland City Council	5-16	Support for children, young people, their families and schools to improve attendance and reduce persistent absence	Consultation via telephone	Bushra Rahman Attendance Development Officer (ADO) Tel 0191 5239745 ext 1185 Email: Bushra.Begum@sunderland.gov.uk	The Venerable Bede C of E Voluntary Aided Secondary School Tunstall Bank Sunderland SR2 0SX
Attendance	Attendance Team (Development)	Extended Services and Attendance Group Children's Services Sunderland City Council	5-16	Support for children, young people, their families and schools to improve attendance and reduce persistent absence	Consultation via telephone	Joy Spencer Attendance Development Officer (ADO) Tel 0191 5536078 Joy.Spencer@sunderland.gov.uk	Saint Aidan's Catholic School & Language College Willow Bank Road Sunderland SR2 7HJ

INDEX	SERVICE NAME	LEAD AGENT	AGE RANGE	WHAT IT DOES	CURRENT ACCESS ROUTE	CONTACT	LOCATION OF CONTACT PERSON AND / OR SERVICE
Attendance	Attendance Team (Development)	Extended Services and Attendance Group Children's Services Sunderland City Council	5-16	Support for children, young people, their families and schools to improve attendance and reduce persistent absence	Consultation via telephone	Shamim Davidson Attendance Development Officer (ADO) Tel 0191 5537704 Email: Shamim.Davidson@sunderland.gov.uk	St Anthony's Catholic Girls School Thornhill Terrace Sunderland SR2 7JN
Attendance	Attendance Team (Development)	Extended Services and Attendance Group Children's Services Sunderland City Council	5-11	Support for children, young people, their families and schools to improve attendance and reduce persistent absence	Consultation via telephone	Donna Brennan Assistant Attendance Development Officer (AADO) * Grangetown Primary School Tel 0191 5612296 Email: Donna.Brennan@sunderland.gov.uk	Stannington Centre Stannington Grove Sunderland SR2 9JT

INDEX	SERVICE NAME	LEAD AGENT	AGE RANGE	WHAT IT DOES	CURRENT ACCESS ROUTE	CONTACT	LOCATION OF CONTACT PERSON AND / OR SERVICE
Attendance	Attendance Team (Development)	Extended Services and Attendance Group Children's Services Sunderland City Council	5-11	Support for children, young people, their families and schools to improve attendance and reduce persistent absence	Consultation via telephone	Julie Grieg Assistant Attendance Development Officer (AADO) * Valley Road Primary School Tel 0191 5612296 Email: Julie.Grieg@sunderland.gov.uk	Stannington Centre Stannington Grove Sunderland SR2 9JT
Attendance	Attendance Team (Development)	Extended Services and Attendance Group Children's Services Sunderland City Council	5-11	Support for children, young people, their families and schools to improve attendance and reduce persistent absence	Consultation via telephone	Leanne Malcolm Assistant Attendance Development Officer (AADO) * Highfield Community Primary School Tel: 0191 5612296 Email: Leanne.Malcolm@sunderland.gov.uk	Stannington Centre Stannington Grove Sunderland SR2 9JT

INDEX	SERVICE NAME	LEAD AGENT	AGE RANGE	WHAT IT DOES	CURRENT ACCESS ROUTE	CONTACT	LOCATION OF CONTACT PERSON AND / OR SERVICE
Attendance	Attendance Team (Enforcement)	Extended Services (Attendance)	5-16	<p>Support for children, young people, their families and schools to improve attendance and reduce persistent absence. Includes:-</p> <ul style="list-style-type: none"> * Fulfilling the statutory duties of the local authority regarding the enforcement of school attendance * Support for families who elect to home educate * Location of children missing from education * Admission and transfers of children in schools within the Local Authority * Child employment and Performance Licensing 	Consultation via telephone	<p>Elaine Matterson Attendance Enforcement & Performance Manager Tel 0191 5615601 elaine.matterson@sunderland.gov.uk</p> <p>Joan Cotcher Senior Attendance & Enforcement Officer Tel 0191 5615644 joan.cotcher@sunderland.gov.uk</p> <p>Shirley Chatton Attendance & Enforcement Officer Tel 0191 5615633 shirley.chatton@sunderland.gov.uk</p>	The Sandhill Centre Grindon Lane Grindon Sunderland SR3 4EN

INDEX	SERVICE NAME	LEAD AGENT	AGE RANGE	WHAT IT DOES	CURRENT ACCESS ROUTE	CONTACT	LOCATION OF CONTACT PERSON AND / OR SERVICE
Behaviour Support	Behaviour Intervention Team (BIT) Key Stage 2	KS2 Pupil Referral Unit (PRU) Children's Services (Sunderland City Council)	KS2 Transition into KS3	Targeted support and advice to schools on pupils at risk of exclusion; delivery of INSET. Co-ordination of LEA activities to support reintegration of excluded pupils. Activities include: * Support on behavioural issues relating to primary age pupils * Observations * Strategies for schools * Individual support * Group work * Transition Support KS2-KS3 * Support for vulnerable pupils	Integrated Services Referral Panel	Behaviour Intervention Team Tel 0191 5535204	Carley Hill Education Centre Emsworth Road Carley Hill Sunderland SR5 2QB

INDEX	SERVICE NAME	LEAD AGENT	AGE RANGE	WHAT IT DOES	CURRENT ACCESS ROUTE	CONTACT	LOCATION OF CONTACT PERSON AND / OR SERVICE
Behaviour Support	Behaviour Intervention Team (BIT) Key Stage 2	KS2 Pupil Referral Unit (PRU) Children's Services (Sunderland City Council)	KS2 Transition into KS3	* SEAL development * Whole school support * Positive Minds * Friends for Life	Integrated Services Referral Panel	John Roberts Behaviour Intervention Team Tel 0191 5535204	Carley Hill Education Centre Emsworth Road Carley Hill Sunderland SR5 2QB
Behaviour Support	Behaviour Intervention Team (BIT) Key Stage 2	KS2 Pupil Referral Unit (PRU) Children's Services (Sunderland City Council)	KS2 Transition into KS3	* Team Teach (positive handling) * Behaviour Management Course * Friends for Life	Integrated Services Referral Panel	Caroline Comer Behaviour Intervention Team Tel 0191 5535204	Carley Hill Education Centre Emsworth Road Carley Hill Sunderland SR5 2QB
Behaviour Support	Behaviour Intervention Team (BIT) Key Stage 2	KS2 Pupil Referral Unit (PRU) Children's Services (Sunderland City Council)	KS2 Transition into KS3	* Nurture Groups * Small Group work * SEAL curriculum * Friends for Life	Integrated Services Referral Panel	Jane Middlemas Behaviour Intervention Team Tel 0191 5535204	Carley Hill Education Centre Emsworth Road Carley Hill Sunderland SR5 2QB

INDEX	SERVICE NAME	LEAD AGENT	AGE RANGE	WHAT IT DOES	CURRENT ACCESS ROUTE	CONTACT	LOCATION OF CONTACT PERSON AND / OR SERVICE
Behaviour Support	Behaviour Intervention Team (BIT) Key Stage 2	KS2 Pupil Referral Unit (PRU) Children's Services (Sunderland City Council)	KS2 Transition into KS3	<ul style="list-style-type: none"> * Whole school reward Systems (Behaviour Incentive League) * Positive Play * Lunch Training * Make It Real (Y5/6) * Raising aspiration * Friends For Life 	Integrated Services Referral Panel	Glenn Robson Behaviour Intervention Team Tel 0191 5535204	Carley Hill Education Centre Emsworth Road Carley Hill Sunderland SR5 2QB
Behaviour Support	Behaviour Intervention Team (BIT) Key Stage 2	KS2 Pupil Referral Unit (PRU) Children's Services (Sunderland City Council)	KS2 Transition into KS3	<ul style="list-style-type: none"> * Transition support * (KS2 - KS3) * Friends for Life 	Integrated Services Referral Panel	Margaret Graham Behaviour Intervention Team Tel 0191 5535204	Carley Hill Education Centre Emsworth Road Carley Hill Sunderland SR5 2QB

INDEX	SERVICE NAME	LEAD AGENT	AGE RANGE	WHAT IT DOES	CURRENT ACCESS ROUTE	CONTACT	LOCATION OF CONTACT PERSON AND / OR SERVICE
Behaviour Support	Key Stage 3/4 Behaviour Support	Children's Services Sunderland City Council	11-16	Information, guidance and support regarding children presenting emotional and behavioural problems in school settings. Works systemically with children, parents and schools.	Integrated Services Referral Panel	Allan Gray Tel 07795 266002 Email: Allan.Gray@schools.sunderland.gov.uk	Castlegreen School Craigshaw Road Hylton Castle SR5 3NF

INDEX	SERVICE NAME	LEAD AGENT	AGE RANGE	WHAT IT DOES	CURRENT ACCESS ROUTE	CONTACT	LOCATION OF CONTACT PERSON AND / OR SERVICE
Behaviour Support	Nursery and Key Stage 1 Behaviour Team	Children's Services Sunderland City Council	3-7	<p>Provides advice and strategies within mainstream school to support children with emotional and behavioural difficulties including</p> <ul style="list-style-type: none"> * Outreach and re integration * Play group (3-4yr olds) * Two part time groups * One fulltime group outside of mainstream classroom * Inset and open evenings supporting professional development of school and LA staff * Nurture Group Forum * Home visits * Webster Stratton/Family Links parenting groups 	Integrated Services Referral Panel	<p>Karen Potts Team Leader Tel 0191 5537791 Email: Karen.Potts@schools.sunderland.gov.uk</p> <p>Emma White Administration Assistant Tel 0191 5537791 Email: Emma.White@schools.sunderland.gov.uk</p>	<p>Valley Rd Primary Corporation Road SR2 8PL</p> <p>and</p> <p>Farringdon Nurture Group Farringdon Primary Archer Road Farringdon SR3 3DJ</p>

INDEX	SERVICE NAME	LEAD AGENT	AGE RANGE	WHAT IT DOES	CURRENT ACCESS ROUTE	CONTACT	LOCATION OF CONTACT PERSON AND / OR SERVICE
Childcare	Family Information Service (FIS)	Children's Services (Sunderland City Council)	0-14	Information about funding, choosing and paying for childcare	Consultation via telephone or email	<p>Tel FIS on 0191 5205505 or email fis@sunderland.gov.uk</p> <p>OR</p> <p>via local Children's Centre</p>	<p>Sunderland Children's Centre Valley Road Community Primary School Corporation Road Sunderland Tel 0191 5537750</p> <p>Sunderland Children's Centre Hudson Road Primary School Villiers Street South Sunderland SR1 2AH Tel 0191 5537675</p> <p>Sunderland Children's Centre Ryhope Infant School Shaftsbury Avenue Sunderland Tel 0191 5536206</p>

INDEX	SERVICE NAME	LEAD AGENT	AGE RANGE	WHAT IT DOES	CURRENT ACCESS ROUTE	CONTACT	LOCATION OF CONTACT PERSON AND / OR SERVICE
							Sunderland Children's Centre Grangetown Primary School Spelterworks Road Sunderland SR2 8PX Tel 0191 5537650

INDEX	SERVICE NAME	LEAD AGENT	AGE RANGE	WHAT IT DOES	CURRENT ACCESS ROUTE	CONTACT	LOCATION OF CONTACT PERSON AND / OR SERVICE
Childcare	Childcare 0-14 years (0-18 for children with disabilities)	Various Providers	0-14 years (0-18 for children with disabilities)	Provision of Childcare 8:00am - 6:00pm Monday - Friday Including:- * Day Nurseries * Childminders * Breakfast and After School Clubs * Holiday Schemes * Creches * Playgroups	Consultation via telephone	To find your local provider contact the Families Information Service (FIS) Tel 0191 5205505 Email: fis@sunderland.gov.uk or Contact your local Children's Centre	Sunderland Children's Centre Valley Road Community Primary School Corporation Road Sunderland Tel 0191 5537750 Sunderland Children's Centre Hudson Road Primary School Villiers Street South Sunderland SR1 2AH Tel 0191 5537675 Sunderland Children's Centre Ryhope Infant School Shaftsbury Avenue Sunderland Tel 0191 5536206

INDEX	SERVICE NAME	LEAD AGENT	AGE RANGE	WHAT IT DOES	CURRENT ACCESS ROUTE	CONTACT	LOCATION OF CONTACT PERSON AND / OR SERVICE
							Sunderland Children's Centre Grangetown Primary School Spelterworks Road Sunderland SR2 8PX Tel 0191 5537650

INDEX	SERVICE NAME	LEAD AGENT	AGE RANGE	WHAT IT DOES	CURRENT ACCESS ROUTE	CONTACT	LOCATION OF CONTACT PERSON AND / OR SERVICE
Childcare - Short Term Crisis	Children's Centre Childcare	Children's Centres Children's Services (Sunderland City Council)	0-5 (0-18 for children with disabilities)	<p>Support in times of</p> <ul style="list-style-type: none"> * Fire, flood or other unforeseen incident within the family home * Accident or other medical emergency involving the parent / carer * Family in need of support to access housing or other support services at very short notice eg those seeking asylum or refugee status or newly arrived traveler families * Death of a close family member * Hospitalisation of parent / carer or sibling * Confidential appointment for parent / carer, child or sibling 	<p>Where childcare is a single need tel local contact to access the service</p> <p>OR</p> <p>Where there are multiple needs, complete the Common Assessment Form and fax to 0191 2193273</p> <p>OR</p> <p>Speak to your Locality Services Co-ordinator</p>	<p>Cath Phillipson Community & Family Support Co-ordinator Tel: 0191 5536206 email: cath.phillipson@sunderland.gov.uk</p> <p>Jane Moran Locality Services Co-ordinator jane.moran@sunderland.gov.uk Mobile: 07827 348587 Email: jane.moran@sunderland.gov.uk</p>	<p>Sunderland Children's Centre Ryhope Infant School Shaftsbury Avenue Sunderland SR2 0RT</p> <p>Hendon Health Centre The Place Hendon Sunderland SR1 2LR</p>

INDEX	SERVICE NAME	LEAD AGENT	AGE RANGE	WHAT IT DOES	CURRENT ACCESS ROUTE	CONTACT	LOCATION OF CONTACT PERSON AND / OR SERVICE
Childcare to support Additional or Multiple Needs	Children's Centres Childcare	Children's Services (Sunderland City Council)	0-5 (0-18 for children with disabilities)	<p>Support for:-</p> <ul style="list-style-type: none"> * Children of families in receipt of benefits or on low income * Children from black & ethnic minority communities * Children with additional support needs, eg delayed development * Children whose parent / carer has additional support needs, eg health needs, mental health issues, learning difficulties * Children of families experiencing domestic violence * Children of families experiencing substance misuse * Children of families who would benefit from further assessment 	<p>Where childcare is a single need tel local contact to access the service</p> <p>OR</p> <p>Where there are multiple needs, complete the Common Assessment Form and fax to 0191 2193273</p> <p>OR</p> <p>Speak to your Locality Services Co-ordinator</p>	<p>Cath Phillipson Community & Family Support Co-ordinator Tel: 0191 5536206 email: cath.phillipson@sunderland.gov.uk</p> <p>Jane Moran Locality Services Co-ordinator jane.moran@sunderland.gov.uk Mobile: 07827 348587 Email: jane.moran@sunderland.gov.uk</p>	<p>Sunderland Children's Centre Ryhope Infant School Shaftsbury Avenue Sunderland SR2 0RT</p> <p>Hendon Health Centre The Place Hendon Sunderland SR1 2LR</p>

INDEX	SERVICE NAME	LEAD AGENT	AGE RANGE	WHAT IT DOES	CURRENT ACCESS ROUTE	CONTACT	LOCATION OF CONTACT PERSON AND / OR SERVICE
Connexions	Connexions - Personal Advisors	Positive Contribution and Economic Well being (Children's Services, Sunderland City Council)	13-19 (25 special needs)	Information, advice and guidance on all aspects of education, employment and training	Open Access. Contact the local Secondary School, Academy or Alternative Education provider where pupil is registered	Martin Hope Personal Advisor Tel 0191 4432875	Southmoor Community School (Mathematics & Computing College) Ryhope Road Sunderland SR2 7TF
Connexions	Connexions - Personal Advisors	Positive Contribution and Economic Well being (Children's Services, Sunderland City Council)	13-19 (25 special needs)	Information, advice and guidance on all aspects of education, employment and training	Open Access. Contact the local Secondary School, Academy or Alternative Education provider where pupil is registered	Lesley Mole Personal Advisor Tel 0191 4432930	St Aidan's Catholic School & Language College Willow Bank Road Sunderland SR2 7HJ

INDEX	SERVICE NAME	LEAD AGENT	AGE RANGE	WHAT IT DOES	CURRENT ACCESS ROUTE	CONTACT	LOCATION OF CONTACT PERSON AND / OR SERVICE
Connexions	Connexions - Personal Advisors	Positive Contribution and Economic Well being (Children's Services, Sunderland City Council)	13-19 (25 special needs)	Information, advice and guidance on all aspects of education, employment and training	Open Access. Contact the local Secondary School, Academy or Alternative Education provider where pupil is registered	Tracey Dale Personal Advisor Tel 0191 5532888	St Anthony's Catholic Girls School Thornhill Terrace Sunderland SR2 7JN
Connexions	Connexions - Personal Advisors	Positive Contribution and Economic Well being (Children's Services, Sunderland City Council)	13-19 (25 special needs)	Information, advice and guidance on all aspects of education, employment and training	Open Access. Contact the local Secondary School, Academy or Alternative Education provider where pupil is registered	Andy Clark Personal Advisor Tel 0191 4432936	Thornhill School Business & Enterprise College Thornholme Road Sunderland SR2 7NA
Connexions	Connexions - Personal Advisors	Positive Contribution and Economic Well being (Children's Services, Sunderland City Council)	13-19 (25 special needs)	Information, advice and guidance on all aspects of education, employment and training	Open Access. Contact the local Secondary School, Academy or Alternative Education provider where pupil is registered	Michael Fowler Personal Advisor Tel 0191 4432931	The Venerable Bede C of E Voluntary Aided Secondary School Tunstall Bank Sunderland SR2 0SX

INDEX	SERVICE NAME	LEAD AGENT	AGE RANGE	WHAT IT DOES	CURRENT ACCESS ROUTE	CONTACT	LOCATION OF CONTACT PERSON AND / OR SERVICE
Connexions	Connexions - Personal Advisors	Positive Contribution and Economic Well being (Children's Services, Sunderland City Council)	13-19 (25 special needs)	Information, advice and guidance on all aspects of education, employment and training	Open Access. Contact the local Secondary School, Academy or Alternative Education provider where pupil is registered	Chris Rickard Personal Advisor Tel 0191 4432921	Sunderland High School Ashbrooke Road Sunderland SR2 7JA
Connexions	Connexions - Personal Advisors	Positive Contribution and Economic Well being (Children's Services, Sunderland City Council)	13-19 (25 special needs)	Information, advice and guidance on all aspects of education, employment and training	Open Access. Contact the local Secondary School, Academy or Alternative Education provider where pupil is registered	Helen Robertson Personal Advisor Tel 0191 4432932	Argyle House School 19-20 Thornhill Park Sunderland SR2 7LA
Connexions	Connexions - Personal Advisors	Positive Contribution and Economic Well being (Children's Services, Sunderland City Council)	13-19 (25 special needs)	Information, advice and guidance on all aspects of education, employment and training	Open Access. Contact the local Secondary School, Academy or Alternative Education provider where pupil is registered	Jackie Fox Personal Advisor Tel 0191 4432927	Barbara Priestman School Meadowside Sunderland SR2 7QN

INDEX	SERVICE NAME	LEAD AGENT	AGE RANGE	WHAT IT DOES	CURRENT ACCESS ROUTE	CONTACT	LOCATION OF CONTACT PERSON AND / OR SERVICE
Connexions	Connexions - Personal Advisors	Positive Contribution and Economic Well being (Children's Services, Sunderland City Council)	13-19 (25 special needs)	Information, advice and guidance on all aspects of education, employment and training	Open Access. Contact the local Secondary School, Academy or Alternative Education provider where pupil is registered	Pat Emmerson / Clare Murray / Joanne Adams Personal Advisor Tel 0191 4432927 0191 4432924 0191 4432946	Portland College Specialist School for Cognitive Learning Weymouth Road Chapelgarth Sunderland SR3 2NQ
Connexions	Connexions - Personal Advisors	Positive Contribution and Economic Well being	13-19 (25 Special Needs)	Information, advice and guidance on all aspects of education, employment and training	Open Access. Contact the local Secondary School, Academy or Alternative Education provider where pupil is registered	Peter Nichol Team Leader - South Tel 0191 4432929	City Library Building 30-32 Fawcett Street Sunderland SR1 1RE

INDEX	SERVICE NAME	LEAD AGENT	AGE RANGE	WHAT IT DOES	CURRENT ACCESS ROUTE	CONTACT	LOCATION OF CONTACT PERSON AND / OR SERVICE
Early Learning	Children's Centres Early Learning	Children's Centres Children's Services (Sunderland City Council)	0-5	<p>Varied menu of services and activities through Children's Centres</p> <ul style="list-style-type: none"> * Toy libraries * Safety Equipment * Breast Feeding Support * Family Learning * Young Parent & Support * Dads & kids * Volunteering * Adult Learning * Baby Massage & Health Promotion 	Consultation via telephone	<p>To find your local provider contact the Families Information Service (FIS)</p> <p>Tel 0191 5205505</p> <p>Email: fis@sunderland.gov.uk</p> <p>or Contact your local Children's Centre</p>	<p>Sunderland Children's Centre Valley Road Community Primary School Corporation Road Sunderland Tel 0191 5537750</p> <p>Sunderland Children's Centre Hudson Road Primary School Villiers Street South Sunderland SR1 2AH Tel 0191 5537675</p> <p>Sunderland Children's Centre Ryhope Infant School Shaftsbury Avenue Sunderland Tel 0191 5536206</p>

INDEX	SERVICE NAME	LEAD AGENT	AGE RANGE	WHAT IT DOES	CURRENT ACCESS ROUTE	CONTACT	LOCATION OF CONTACT PERSON AND / OR SERVICE
							Sunderland Children's Centre Grangetown Primary School Spelterworks Road Sunderland SR2 8PX Tel 0191 5537650

INDEX	SERVICE NAME	LEAD AGENT	AGE RANGE	WHAT IT DOES	CURRENT ACCESS ROUTE	CONTACT	LOCATION OF CONTACT PERSON AND / OR SERVICE
Educational Psychology	Educational Psychology	Educational Psychology Team Children's Services, Sunderland City Council	0-19	<p>The aim of the team is to improve the lifetime opportunities and psychological wellbeing of children and young people through the application of psychology.</p> <p>A named psychologist works in each geographical area (based around secondary schools). The psychologist works in partnership with parents, carers and other practitioners and carries out a range of activities including observation and specialist assessments and interventions.</p>	Integrated Services Referral Panel	<p>Arlette Kavanagh Assistant Educational Psychologist Supporting Gill Cassap, Janet Connelly, Keith Ratcliffe</p> <p>Tel 0191 5612216</p> <p>Email: Arlette.Kavanagh@sunderland.gov.uk</p>	Stannington Centre Stannington Grove Sunderland SR2 9JY

INDEX	SERVICE NAME	LEAD AGENT	AGE RANGE	WHAT IT DOES	CURRENT ACCESS ROUTE	CONTACT	LOCATION OF CONTACT PERSON AND / OR SERVICE
Educational Psychology	Educational Psychology	Educational Psychology Team Children's Services, Sunderland City Council	0-19	The aim of the team is to improve the lifetime opportunities and psychological wellbeing of children and young people through the application of psychology. A named psychologist works in each geographical area (based around secondary schools). The psychologist works in partnership with parents, carers and other practitioners and carries out a range of activities including observation and specialist assessments and interventions.	Integrated Services Referral Panel	Keith Ratcliffe Senior Practitioner Educational Psychologist * KS1/2/3 PRU * Looked after Children Tel 0191 5612216 Email: Keith.Ratcliffe@sunderland.gov.uk	Stannington Centre Stannington Grove Sunderland SR2 9JY

INDEX	SERVICE NAME	LEAD AGENT	AGE RANGE	WHAT IT DOES	CURRENT ACCESS ROUTE	CONTACT	LOCATION OF CONTACT PERSON AND / OR SERVICE
Educational Psychology	Educational Psychology	Educational Psychology Team Children's Services, Sunderland City Council	0-19	<p>The aim of the team is to improve the lifetime opportunities and psychological wellbeing of children and young people through the application of psychology.</p> <p>A named psychologist works in each geographical area (based around secondary schools). The psychologist works in partnership with parents, carers and other practitioners and carries out a range of activities including observation and specialist assessments and interventions.</p>	Integrated Services Referral Panel	<p>Janet Connelly Senior Educational Psychologist * Grangetown Primary * Valley Road Community Primary</p> <p>Tel 0191 5612216</p> <p>Email: Janet.Connelly@sunderland.gov.uk</p>	Stannington Centre Stannington Grove Sunderland SR2 9JY

INDEX	SERVICE NAME	LEAD AGENT	AGE RANGE	WHAT IT DOES	CURRENT ACCESS ROUTE	CONTACT	LOCATION OF CONTACT PERSON AND / OR SERVICE
Educational Psychology	Educational Psychology	Educational Psychology Team Children's Services, Sunderland City Council	0-19	<p>The aim of the team is to improve the lifetime opportunities and psychological wellbeing of children and young people through the application of psychology.</p> <p>A named psychologist works in each geographical area (based around secondary schools). The psychologist works in partnership with parents, carers and other practitioners and carries out a range of activities including observation and specialist assessments and interventions.</p>	Integrated Services Referral Panel	<p>Lynn Fletcher Principal Educational Psychologist * Hill View Infant * Hill View Junior * Southmoor Community School</p> <p>Tel 0191 5612216</p> <p>Email: Lynn.Fletcher@sunderland.gov.uk</p>	Stannington Centre Stannington Grove Sunderland SR2 9JY

INDEX	SERVICE NAME	LEAD AGENT	AGE RANGE	WHAT IT DOES	CURRENT ACCESS ROUTE	CONTACT	LOCATION OF CONTACT PERSON AND / OR SERVICE
Educational Psychology	Educational Psychology	Educational Psychology Team Children's Services, Sunderland City Council	0-19	<p>The aim of the team is to improve the lifetime opportunities and psychological wellbeing of children and young people through the application of psychology.</p> <p>A named psychologist works in each geographical area (based around secondary schools). The psychologist works in partnership with parents, carers and other practitioners and carries out a range of activities including observation and specialist assessments and interventions.</p>	Integrated Services Referral Panel	<p>Nicola Lynch Trainee Educational Psychologist * St Anthony's Catholic Girls School * St Aidan's Catholic School and Language College * Barbara Priestman Child Development Unit</p> <p>Tel 0191 5612216</p> <p>Email: Nicola.Lynch@sunderland.gov.uk</p>	Stannington Centre Stannington Grove Sunderland SR2 9JY

INDEX	SERVICE NAME	LEAD AGENT	AGE RANGE	WHAT IT DOES	CURRENT ACCESS ROUTE	CONTACT	LOCATION OF CONTACT PERSON AND / OR SERVICE
Educational Psychology	Educational Psychology	Educational Psychology Team Children's Services, Sunderland City Council	0-19	<p>The aim of the team is to improve the lifetime opportunities and psychological wellbeing of children and young people through the application of psychology.</p> <p>A named psychologist works in each geographical area (based around secondary schools). The psychologist works in partnership with parents, carers and other practitioners and carries out a range of activities including observation and specialist assessments and interventions.</p>	Integrated Services Referral Panel	<p>Jan O'Neill Senior Education Psychologist (Autism) * Barbara Priestman School</p> <p>Tel 0191 5612216</p> <p>Email: Jan.O'neill@sunderland.gov.uk</p>	Stannington Centre Stannington Grove Sunderland SR2 9JY

INDEX	SERVICE NAME	LEAD AGENT	AGE RANGE	WHAT IT DOES	CURRENT ACCESS ROUTE	CONTACT	LOCATION OF CONTACT PERSON AND / OR SERVICE
Educational Psychology	Educational Psychology	Educational Psychology Team Children's Services, Sunderland City Council	0-19	<p>The aim of the team is to improve the lifetime opportunities and psychological wellbeing of children and young people through the application of psychology.</p> <p>A named psychologist works in each geographical area (based around secondary schools). The psychologist works in partnership with parents, carers and other practitioners and carries out a range of activities including observation and specialist assessments and interventions.</p>	Integrated Services Referral Panel	<p>Angela price Senior Educational Psychologist * Portland College, Specialist School for Cognition and Learning</p> <p>Tel 0191 5612216</p> <p>Email: Angela.price@sunderland.gov.uk</p>	Stannington Centre Stannington Grove Sunderland SR2 9JY

INDEX	SERVICE NAME	LEAD AGENT	AGE RANGE	WHAT IT DOES	CURRENT ACCESS ROUTE	CONTACT	LOCATION OF CONTACT PERSON AND / OR SERVICE
Educational Psychology	Educational Psychology	Educational Psychology Team Children's Services, Sunderland City Council	0-19	<p>The aim of the team is to improve the lifetime opportunities and psychological wellbeing of children and young people through the application of psychology.</p> <p>A named psychologist works in each geographical area (based around secondary schools). The psychologist works in partnership with parents, carers and other practitioners and carries out a range of activities including observation and specialist assessments and interventions.</p>	Integrated Services Referral Panel	<p>Helen Snowball Educational Psychologist * Benedict Biscop CE (Aided) Primary * Ryhope Infant / Junior * St Paul's CE Controlled Primary * Venerable Bede COFE Secondary School</p> <p>Tel: 0191 5612216</p> <p>Email: Helen.Snowball@sunderland.gov.uk</p>	Stannington Centre Stannington Grove Sunderland SR2 9JY

INDEX	SERVICE NAME	LEAD AGENT	AGE RANGE	WHAT IT DOES	CURRENT ACCESS ROUTE	CONTACT	LOCATION OF CONTACT PERSON AND / OR SERVICE
Educational Psychology	Educational Psychology	Educational Psychology Team Children's Services, Sunderland City Council	0-19	<p>The aim of the team is to improve the lifetime opportunities and psychological wellbeing of children and young people through the application of psychology.</p> <p>A named psychologist works in each geographical area (based around secondary schools). The psychologist works in partnership with parents, carers and other practitioners and carries out a range of activities including observation and specialist assessments and interventions.</p>	Integrated Services Referral Panel	<p>Helen Tamworth Trainee Educational Psychologist * Diamond Hall Infant/Junior * Hudson Road Primary * Millfield Community Nursery * Thornhill School</p> <p>Tel: 0191 5612216</p> <p>Email: Helen.Tamworth@sunderland.gov.uk</p>	Stannington Centre Stannington Grove Sunderland SR2 9JY

INDEX	SERVICE NAME	LEAD AGENT	AGE RANGE	WHAT IT DOES	CURRENT ACCESS ROUTE	CONTACT	LOCATION OF CONTACT PERSON AND / OR SERVICE
Educational Psychology	Educational Psychology	Educational Psychology Team Children's Services, Sunderland City Council	0-19	<p>The aim of the team is to improve the lifetime opportunities and psychological wellbeing of children and young people through the application of psychology.</p> <p>A named psychologist works in each geographical area (based around secondary schools). The psychologist works in partnership with parents, carers and other practitioners and carries out a range of activities including observation and specialist assessments and interventions.</p>	Integrated Services Referral Panel	<p>Tony Waterhouse Education Psychologist * Mill Hill Nursery/Primary</p> <p>Tel 0191 5612216</p> <p>Email: Tony.Waterhouse@sunderland.gov.uk</p>	Stannington Centre Stannington Grove Sunderland SR2 9JY

INDEX	SERVICE NAME	LEAD AGENT	AGE RANGE	WHAT IT DOES	CURRENT ACCESS ROUTE	CONTACT	LOCATION OF CONTACT PERSON AND / OR SERVICE
Educational Psychology	Educational Psychology	Educational Psychology Team Children's Services, Sunderland City Council	0-19	The aim of the team is to improve the lifetime opportunities and psychological wellbeing of children and young people through the application of psychology. A named psychologist works in each geographical area (based around secondary schools). The psychologist works in partnership with parents, carers and other practitioners and carries out a range of activities including observation and specialist assessments and interventions.	Integrated Services Referral Panel	Niamh Wherity Trainee Educational Psychologist * St Mary's RC Voluntary Aided Primary * St Patrick's RC Primary Tel 0191 5612216 Email: Niamh.Wherity@sunderland.gov.uk	Stannington Centre Stannington Grove Sunderland SR2 9JY
Extended Services	Playing for Success	Extended Services and Attendance Group Children's Services, Sunderland City Council	9-13	Raise skills in literacy and numeracy and improve confidence and self esteem	Schools identified through links with Study Support and School Improvement	Joseph Puech Playing for Success Manager Tel 0191 5618825 Email: Joe.Peuch@sunderland.gov.uk	Sandhill Centre Grindon Lane Grindon Sunderland SR3 4EN

INDEX	SERVICE NAME	LEAD AGENT	AGE RANGE	WHAT IT DOES	CURRENT ACCESS ROUTE	CONTACT	LOCATION OF CONTACT PERSON AND / OR SERVICE
Extended Services	Extended Schools Cluster Co-ordination	Extended Services and Attendance Group Children's Services, Sunderland City Council	5-19	To organise, Co-ordinate and evaluate Extended Services across a defined cluster of schools - eg Study Support, Community Activity	Consultation via telephone or email	Kris Heskett Schools Cluster Manager for Extended Services Tel: 0191 5537675 Email: community.hrps@edco.m.sunderland.gov.uk	Hudson Road Primary School Villiers Street South Sunderland SR1 2AH
Extended Services	Extended Schools Cluster Co-ordination	Extended Services and Attendance Group Children's Services, Sunderland City Council	5-19	To organise, Co-ordinate and evaluate Extended Services across a defined cluster of schools - eg Study Support, Community Activity	Consultation via telephone or email	Claire Sutherland Schools Cluster Manager for Extended Services Tel: 0191 5239745 Email: Clare.Sutherland@venerablebede.co.uk	The Venerable Bede Church of England (Aided) Secondary School Tunstall Bank Sunderland SR2 0SX
Extended Services	Extended Schools Cluster Co-ordination	Extended Services and Attendance Group Children's Services, Sunderland City Council	5-19	To organise, Co-ordinate and evaluate Extended Services across a defined cluster of schools - eg Study Support, Community Activity	Consultation via telephone or email	Diane Blackwell Schools Cluster Manager for Extended Schools Tel: 0191 5537700 Email: st.anthonys@schools.sunderland.gov.uk	St Anthony's Catholic Girls School Thornhill Terrace Sunderland SR2 7JN

INDEX	SERVICE NAME	LEAD AGENT	AGE RANGE	WHAT IT DOES	CURRENT ACCESS ROUTE	CONTACT	LOCATION OF CONTACT PERSON AND / OR SERVICE
Extended Services	Extended Schools Cluster Co-ordination	Extended Services and Attendance Group Children's Services Sunderland City Council	5-19	To organise, Co-ordinate and evaluate Extended Services across a defined cluster of schools - eg Study Support, Community Activity	Consultation via telephone or email	Mandy Henderson Schools Cluster Manager for Extended Schools Tel: 0191 5537600 Email: Mandy.Henderson@ed.com.sunderland.gov.uk	Southmoor Community School Ryhope Road Sunderland SR2 7TF
Extended Services - Lettings	Community Lettings Information	Land and Property Development and Regeneration Sunderland City Council	N/A	Provides schools with a "Lettings Pack". Information includes; charging policy, risk assessment, standard terms and conditions, Hire agreements and Health and Safety	Consultation via telephone or email	Louise Blakelock Tel 0191 5612633 Email: Louise.Blakelock@sunderland.gov.uk	50 Fawcett Street Sunderland SR1 1RF
Extended Services - Risk Management & Insurance	Risk Management & Insurance guidance, support and advice	Risk Management and Insurance Services Sunderland City Council	N/A	Provides advice, guidance and support across all council settings. Will provide support to schools with issue / concerns relating to Extended Services and community access	Consultation via telephone or email	Jennifer Houston Assistant Insurance Manager Tel: 0191 5615038 Email: Jennifer.Houston@sunderland.gov.uk	Room 109 Jack Crawford House Commercial Road Sunderland SR2 8QR

INDEX	SERVICE NAME	LEAD AGENT	AGE RANGE	WHAT IT DOES	CURRENT ACCESS ROUTE	CONTACT	LOCATION OF CONTACT PERSON AND / OR SERVICE
Family Support	Child & Family Support Service	Social Care Children's Services, Sunderland City Council	0-12	<p>Delivers one to one family support as well as structured parenting programmes</p> <p>Provides individual and joint work with both the child and parents / carers supported and influenced through Social Work practice</p>	<p>Where parenting and family support is a single need tel local contact to access the service</p> <p>OR</p> <p>Where there are multiple needs, complete the Common Assessment Form and fax to 0191 2193273</p> <p>OR</p> <p>Speak to your Locality Services Co-ordinator</p>	<p>Cath Phillipson Community & Family Support Co-ordinator Tel: 0191 5536206 email: cath.phillipson@sunderland.gov.uk</p> <p>Jane Moran Locality Services Co-ordinator Mobile: 07827 348587 Email: Jane.moran@sunderland.gov.uk</p>	<p>Sunderland Children's Centre Ryhope Infant School Shaftsbury Avenue Sunderland SR2 0RT</p> <p>Hendon Health Centre The Place Hendon Sunderland SR1 2LR</p>
Health	Children's Centre Health Visiting Services	Sunderland Teaching Primary Care Trust	0-5	Provides a public health service for children 0 – 5 years and their families including:-child development, child protection, immunisations, parent support, family health advice.	Consultation via telephone	<p>Moira Scales Health Co-ordinator - East Tel: 0191 5615150 Email: moira.scales@sunderland.gov.uk</p>	Portland College Weymouth Road Chapelgarth Sunderland SR3 2NQ

INDEX	SERVICE NAME	LEAD AGENT	AGE RANGE	WHAT IT DOES	CURRENT ACCESS ROUTE	CONTACT	LOCATION OF CONTACT PERSON AND / OR SERVICE
Health	Community Paediatrician	City Hospitals	0-5	<p>Assesses children in the informal setting of local Children's Centres or at home when a concern has been raised about their health or development</p> <p>Part of the Paediatric Department at City Hospitals Sunderland, works closely with colleagues both in hospital and within Children's Centres</p>	<p>Where paediatrics is a single need tel local contact to access the service</p> <p>OR</p> <p>Where there are multiple needs, complete the Common Assessment Form and fax to 0191 2193273</p> <p>OR</p> <p>Speak to your Locality Services Co-ordinator</p>	<p>Moira Scales Health Co-ordinator - East Tel 0191 5615150 Email: moira.scales@sunderland.gov.uk</p> <p>Jane Moran Mobile 07827 348587 Locality Services Co-ordinator Email: jane.moran@sunderland.gov.uk</p>	<p>Portland College Weymouth Road Chapelgarth Sunderland SR3 2NQ</p> <p>Hendon Health Centre The Place Hendon Sunderland SR1 2LR</p>

INDEX	SERVICE NAME	LEAD AGENT	AGE RANGE	WHAT IT DOES	CURRENT ACCESS ROUTE	CONTACT	LOCATION OF CONTACT PERSON AND / OR SERVICE
Health	Fit for Footy	SAFC Foundation	8-16	Helps pupils to identify what makes a healthy lifestyle and assists with physical aspects and fitness. It is a six week course - 1hr per week	Consultation via telephone	Steve Colquhoun & Michael Armstrong Tel 0191 5515185	Stadium of Light Sunderland SR5 1SU
Health	School Nursing Service	Sunderland Teaching Primary Care Trust	5-16	Provides a public health service to promote health and wellbeing of school aged children including:- ° immunisation ° health advice and support ° Child protection ° CAF ° Support at TAC	Consultation via telephone or email	Maureen Johnson Modern Matron Tel 0191 5297171	Sunderland Teaching Primary Care Trust Pemberton House Colima Avenue Sunderland Enterprise Park Sunderland
Health	Programme for overweight and obese children	Healthy Schools Teaching Primary Care Trust	5-11	A health programme to raise awareness and develop strategies for address obesity in children and young people	To be determined - programme commences 2010	Elouise Robinson Specialist Dietitian and Healthy Schools Co-ordinator (Nutrition and Physical Activity) Tel 0161 5614647 Email Elouise.robinson@sunderland.gov.uk	South Hylton House Unit 1 Hylton Bank Sunderland SR4 0JL

INDEX	SERVICE NAME	LEAD AGENT	AGE RANGE	WHAT IT DOES	CURRENT ACCESS ROUTE	CONTACT	LOCATION OF CONTACT PERSON AND / OR SERVICE
Health	Programmes to promote healthy eating and lifestyles	School Food Trust Healthy Schools Sunderland Teaching Primary Care Trust	5-16	Provides advice, information and funding to support school clubs to follow healthy eating programmes such as Lets Get Cooking	Consultation via telephone	Elouise Robinson Specialist Dietitian and Healthy Schools Co-ordinator (Nutrition and Physical Activity) Tel 0161 5614647 Email Elouise.robinson@sunderland.gov.uk	South Hylton House Unit 1 Hylton Bank Sunderland SR4 0JL
Healthy Schools	Healthy Schools	Community and Cultural Services Sunderland City Council	5-16	Supporting Schools to achieve healthy schools status	Consultation via telephone	Elouise Robinson Specialist Dietitian and Healthy Schools Co-ordinator (Nutrition and Physical Activity) Tel 0161 5614647 Email Elouise.robinson@sunderland.gov.uk	South Hylton House Unit 1 Hylton Bank Sunderland SR4 0JL Tel 0191 5614647

INDEX	SERVICE NAME	LEAD AGENT	AGE RANGE	WHAT IT DOES	CURRENT ACCESS ROUTE	CONTACT	LOCATION OF CONTACT PERSON AND / OR SERVICE
Housing	Diversionary Activities	Gentoo Sunderland	13-19	Gentoo Sunderland work in partnership with the police and other agencies to identify youth disorder hotspots and then facilitate activities based on what the young people would like to do.	Through Gentoo Sunderland's Neighbourhood Safety Team	Amanda Ladner Tel 0191 5255000	Houghton Housing Office The Skline Centre 88 Newbottle Street Houghton le Spring DH4 4AJ
Housing	STEPS	Gentoo Living	16-21	Provides Tenancy Support to young people in Gentoo Tenancies	Gentoo's Allocations process	Gillian McQue Tel 0191 5255000	(Currently) :- Houghton Housing Office The Skyline Centre 88 Newbottle Street Houghton le Spring DH4 4AJ (From Feb 2010) Downhill Housing Office Hylton Lane Sunderland SR5 4EX

INDEX	SERVICE NAME	LEAD AGENT	AGE RANGE	WHAT IT DOES	CURRENT ACCESS ROUTE	CONTACT	LOCATION OF CONTACT PERSON AND / OR SERVICE
Housing	Various Programmes with Local Schools	Gentoo Group	8-19	Provides information and advice to young people in relation to a number of agendas including Neighbourhood Safety, The Environment and general Citizenship issues.	Via each individual school	Elaine Murray Tel 0191 5255000	(Currently) 2 Emperor Way Doxford International Business Park Sunderland SR3 3XR (From Feb 2010) Downhill Housing Office Hylton Lane Sunderland SR5 4EX
Housing	Victim Support Service	Gentoo Sunderland	Any	Provides support to any gentoo household member who has been the victim of Anti-Social Behaviour	Through Gentoo Sunderland's Neighbourhood Safety monitoring processes	Amanda Ladner Tel 0191 5255000	Houghton Housing Office The Skline Centre 88 Newbottle Street Houghton le Spring DH4 4AJ
Housing	Young Persons Involvement Group	Gentoo Sunderland	up to age 25	Provides a formal opportunity for young people living in a gentoo home or neighbourhood to give us their views	Contact lead officer	Tony Paczynski Tel: 0191 5255000	(Currently):- Southwick Housing Office) The Cornhill Centre Goschen Street Southwick Sunderland SR5 2LR

INDEX	SERVICE NAME	LEAD AGENT	AGE RANGE	WHAT IT DOES	CURRENT ACCESS ROUTE	CONTACT	LOCATION OF CONTACT PERSON AND / OR SERVICE
							(From January 2010) Houghton Housing Office The Skline Centre 88 Newbottle Street Houghton le Spring DH4 4AJ

INDEX	SERVICE NAME	LEAD AGENT	AGE RANGE	WHAT IT DOES	CURRENT ACCESS ROUTE	CONTACT	LOCATION OF CONTACT PERSON AND / OR SERVICE
Learning Support	Final Score	SAFC Foundation	9-13	Works to improve numeracy skills using the Stadium as a motivational tool for learning (2 day course)	Consultation via telephone	Phil Cowler Tel 0191 5515312	Stadium of Light Sunderland SR5 1SU
Learning Support	Learning through Football	SAFC Foundation	6-11	One off visits to Stadium of Light. Sessions are linked to the National Curriculum/ECM. Covers Literacy, Numeracy, Health & Art Courses promoted via e-bulletin	Consultation via telephone	Phil Cowler Tel 0191 5515312	Stadium of Light Sunderland SR5 1SU
Learning Support	Write on target	SAFC Foundation	10-11	Aims to increase pupils motivation and ability in writing	Contact via telephone for costings	Phil Cowler Tel 0191 5515312	Stadium of Light Sunderland SR5 1SU
Mental Health	ADHD Support	Sunderland Carers Centre	Adults	Voluntary support group for parents and carers	Direct Access to the service	Team member Tel 0191 5673232	Sunderland Carer's Centre 12 Toward Road Sunderland

INDEX	SERVICE NAME	LEAD AGENT	AGE RANGE	WHAT IT DOES	CURRENT ACCESS ROUTE	CONTACT	LOCATION OF CONTACT PERSON AND / OR SERVICE
Mental Health	ADHD Team	EBD Team City Hospitals	0-16	Assessment, treatment and management of ADHD	Integrated Services Referral Panel	Dr Elaine Martin EBD Team Sunderland Royal Hospital Tel 0191 5656256	EBD Team Sunderland Royal Hospital Kayll Road Sunderland SR4 7TP
Mental Health	Barnes Unit	CAMHS	16-18	Mental health out patient service for young people who have complex mental health problems. Providing assessment and treatment including Cognitive therapy, Family therapy, Medication and Eye Movement desentisation and reprocessing (E.M.D.R)	Referral by GP	Tony Ross Tel 0191 5227737	Barnes Unit Children's Centre Durham Road SR3 4EF
Mental Health	CCAMHS Telephone Consultation and Advice (Tier 2 CAMHS)	CCAMHS	For practitioners and relating to 0-18	Offers advice on children's mental health and discuss suitability to services and offering some idea's on supportive strategies	Advice line	CCAMHS Staff Tel 0191 5141622	CCAMHS Valley Road Community Primary School Corporation Road Sunderland SR2 8PL

INDEX	SERVICE NAME	LEAD AGENT	AGE RANGE	WHAT IT DOES	CURRENT ACCESS ROUTE	CONTACT	LOCATION OF CONTACT PERSON AND / OR SERVICE
Mental Health	CCAMHS Incredible Years (aka Webster Stratton)	CCAMHS	5-11 and Adults	A multi agency delivered, research based, preventative and treatment group intervention to manage and reduce children's behaviour problems and increase social competence at home and school. It includes a parenting programme , Dinosaur school and teacher training	Integrated Services Referral Panel	CCAMHS Main Office Tel 0191 5141622	CCAMHS Main Office Valley road Community Primary Corporation Road Hendon SR2 8PL
Mental Health	Child & Family Department (Tier 3 CAMHS)	City Hospitals	Up to 16	Offers long term support and therapy to children, young people with moderate to severe mental health problems and their families via counselling, drama, art and play therapy	Integrated Services Referral Panel	Child and Family Department Tel 0191 5699026	Child and Family Department Sunderland Royal Hospital Kayll Road Sunderland SR4 7TP
Mental Health	Child & Family Department (Tier 3 CAMHS)	City Hospitals	Up to 16	Offers long term support and therapy to children, young people with moderate to severe mental health problems and their families via counselling, drama, art and play therapy	Integrated Services Referral Panel	Dr Ali Doubtfire Steve Coates Dr Geethanath Tel 0191 5699026	Child and Family Department Sunderland Royal Hospital Kayll Road Sunderland SR4 7TP

INDEX	SERVICE NAME	LEAD AGENT	AGE RANGE	WHAT IT DOES	CURRENT ACCESS ROUTE	CONTACT	LOCATION OF CONTACT PERSON AND / OR SERVICE
Mental Health	Children's Centre Early Years Mental Health Service	Community CAMHS (tier 2 service) Teaching Primary Care Trust	0-5	Early intervention / prevention, promoting emotional wellbeing of children 0-5 years and their families	Common Assessment Framework	Jane Moran Locality Services Co-ordinator Mobile 07827 348587 Email: Jane.moran@sunderland.gov.uk	Hendon Health Centre Meaburn Terrace Hendon Sunderland
Mental Health	Community CAMHS	Sunderland Teaching Primary Care Trust	Up to 18	Offers prevention, early intervention and assessment. Support, advice and strategies for staff, group work for children and young people with mild to moderate mental health problems	Integrated Services Referral Panel	CCAMHS Main Office Tel 0191 5141622	CCAMHS Main Office Valley road Community Primary Corporation Road Hendon SR2 8PL
Mental Health	Community CAMHS Counselling Service	Sunderland Teaching Primary Care Trust	5-18	Up to 10 counselling sessions offered to support a range of transitions including bereavement and family breakdown	Integrated Services Referral Panel	CCAMHS Main Office Tel 0191 5141622	CCAMHS Main Office Valley road Community Primary Corporation Road Hendon SR2 8PL

INDEX	SERVICE NAME	LEAD AGENT	AGE RANGE	WHAT IT DOES	CURRENT ACCESS ROUTE	CONTACT	LOCATION OF CONTACT PERSON AND / OR SERVICE
Mental Health	Counselling Service	Sunderland Counselling Service	18+	Bereavement counselling, Counselling around Sexual Abuse Women's Service	Consultation via telephone	Toby Sweet tel 0191 5147007	Sunderland Counselling Services 37 West Sunnyside Sunderland
Mental Health	Deliberate Self Harm Team	Child and Family Department	Up to 18	Offers long term specialist support to children, young people and their families	Integrated Services Referral Panel	Dr Ali Doubtfire Tel 0191 5699026	Child and Family Department Sunderland Royal Hospital Kayll Road Sunderland
Mental Health	Looked After Children	NTW MH Trust	Up to 18 and adults	Provides psychological support for children, young people, and families/carers of looked after children	Integrated Services Referral Panel	Chris Bonnett Tel 0191 5656256	Chris Bonnett Psychologist Sunderland Royal Hospital Kayll Road Sunderland

INDEX	SERVICE NAME	LEAD AGENT	AGE RANGE	WHAT IT DOES	CURRENT ACCESS ROUTE	CONTACT	LOCATION OF CONTACT PERSON AND / OR SERVICE
Mental Health	Looked After Children Services	NTW MH Trust	up to 18 years	Assessments of Looked after Children support to carers consultation	Integrated Services Referral Panel	Chris Bonnett Tel 0191 5656256	Chris Bonnett Psychologist Sunderland Royal Hospital Kayll Road Sunderland
Mental Health	Support Group	Sunderland Carers Centre	Adults	Voluntary group for parents and carers	Direct Access to the service	Lisa Watson or Amanda Jackson Tel 0191 5673232	Sunderland Carers Centre 12 Toward Road Sunderland SR1 2QF
Mental Health	Training (Tier 2 CAMHS)	Community CAMHS (Sunderland Teaching Primary Care Trust)	For Practitioners and relating to 0-18	Awareness raising, Short Child and Adolescent Mental Health Programme (SCAMHPs) Disorder specific training eg ADHD, anxiety and depression	via Website SEN Training Plan	Alison Carroll Tel 0191 5535529	Alison Carroll Maplewood School Redcar Road Sunderland

INDEX	SERVICE NAME	LEAD AGENT	AGE RANGE	WHAT IT DOES	CURRENT ACCESS ROUTE	CONTACT	LOCATION OF CONTACT PERSON AND / OR SERVICE
Parenting	Family Learning	SAFC Foundation	5-14 plus parents	10 week programme looking at how children develop physically, socially and emotionally. Session split into two sections with parents working on their own for the first hour followed by an hour of fun and games with adults and children.	Telephone for costs and further information	Matt hill Tel 0191 5515067 Email matthew.hill@safc.com	Stadium of Light Sunderland SR5 1SU
Parenting	Parenting programmes	Sunderland City Council	0-16	Courses to support parents in their parenting role	Consultation via telephone. Or view the Sunderland Parenting Directory on the website for more information www.sunderlandchildrenscentres.org	Laura Johnstone Tel 0191 4432893	City Library & Art Centre 28 - 30 Fawcett Street Sunderland SR1 1RE

INDEX	SERVICE NAME	LEAD AGENT	AGE RANGE	WHAT IT DOES	CURRENT ACCESS ROUTE	CONTACT	LOCATION OF CONTACT PERSON AND / OR SERVICE
Parenting & Family Support	B2B (Bump to baby +) Services for young Parents	Sunderland Teaching Primary Care Trust	school age parents up to 20 years old	Provide support, training and education to young parents on health related issues	Consultation via telephone	Tracey Etheridge 0191 5532381	Hendon Health Centre Meaburn Terrace Hendon Sunderland

INDEX	SERVICE NAME	LEAD AGENT	AGE RANGE	WHAT IT DOES	CURRENT ACCESS ROUTE	CONTACT	LOCATION OF CONTACT PERSON AND / OR SERVICE
Parenting & Family Support	Children's Centre Family Support Service	Social Care Children's Services, Sunderland City Council	0-12	Family Support Work through befriending, listening and providing practical support on a range of issues to help families	<p>Where parenting and family support is a single need tel local contact to access the service</p> <p>OR</p> <p>Where there are multiple needs, complete the Common Assessment Form and fax to 0191 2193273</p> <p>OR</p> <p>Speak to your Locality Services Co-ordinator</p>	<p>Cath Phillipson Community & Family Support Co-ordinator Tel: 0191 5536206 Email: cath.phillipson@sunderland.gov.uk</p> <p>Jane Moran Locality Services Co-ordinator jane.moran@sunderland.gov.uk Mobile: 07827 348587 Email: jane.moran@sunderland.gov.uk</p>	<p>Sunderland Children's Centre Ryhope Infant School Shaftsbury Avenue Sunderland SR2 0RT</p> <p>Hendon Health Centre The Place Hendon Sunderland SR1 2LR</p>

INDEX	SERVICE NAME	LEAD AGENT	AGE RANGE	WHAT IT DOES	CURRENT ACCESS ROUTE	CONTACT	LOCATION OF CONTACT PERSON AND / OR SERVICE
Police	Northumbria Police	Sunderland City Centre Neighbourhood Policing Team	All ages	Neighbourhood Policing team	direct access to the service	Inspector 7300 Neal Craig * Sunderland City Centre * Millfield * Barnes * St Michael's Tel 0191 5636878 email: sunderland-citycentre.neighbourhood@northumbria.pnn.police.uk	Tel 0191 5636878
Police	Northumbria Police	Sunderland East Neighbourhood Policing Team	All ages	Neighbourhood Policing team	direct access to the service	Inspector 7305 Mark Ord * Hendon * Ryhope * Grangetown Tel 0191 5636832 email: sunderland-east.neighbourhood@northumbria.pnn.police.uk	Tel 0191 5636832

INDEX	SERVICE NAME	LEAD AGENT	AGE RANGE	WHAT IT DOES	CURRENT ACCESS ROUTE	CONTACT	LOCATION OF CONTACT PERSON AND / OR SERVICE
Safeguarding	Domestic Violence	Wearside Women in Need	0-19	A community safety partnership to support the victims of domestic violence. Outreach support Refuge places for men and women (and children)	Consultation by telephone	Anita Lord Assistant Director Tel 0191 4163550	Protected Address
Safeguarding	Domestic Violence	Wearside Women in Need	0-19	Outreach and Safeguarding support for families	Consultation by telephone	Kris Knight Tel 0191 4163550	Protected Address
Safeguarding	Domestic Violence	Wearside Women in Need	All ages	Helpline for advice and support for men, women, children, young people and practitioners	Consultation via telephone	Helpline telephone 0800 0665555 for information	Protected Address
Safeguarding	Domestic Violence	Wearside Women in Need	Adults	Project to support female victims of domestic violence who have mental health problems	Consultation via telephone	Helpline telephone 0800 0665555 for information	Protected Address

INDEX	SERVICE NAME	LEAD AGENT	AGE RANGE	WHAT IT DOES	CURRENT ACCESS ROUTE	CONTACT	LOCATION OF CONTACT PERSON AND / OR SERVICE
Safeguarding	Domestic Violence	Wearside Women in Need	16-25	Homeless Support for victims of domestic violence	Consultation via telephone	Helpline telephone 0800 0665555 for information	Protected Address
Safeguarding	Domestic Violence	Wearside Women in Need	16+	TZ Project for young women with a history of family abuse	Consultation via telephone	Helpline telephone 0800 0665555 for information	Protected Address

INDEX	SERVICE NAME	LEAD AGENT	AGE RANGE	WHAT IT DOES	CURRENT ACCESS ROUTE	CONTACT	LOCATION OF CONTACT PERSON AND / OR SERVICE
Safeguarding	<p>Education Safeguarding Team</p> <p>Advice, guidance, support and training for schools and services</p>	<p>Education safeguarding Team Children's Services Sunderland City Council</p>	0-19	<p>Advice, guidance, support and training on all aspects of safeguarding and key areas of responsibility, including:</p> <ul style="list-style-type: none"> * Updates of Local and National requirements * Training on specific areas of child protection both single and multi agency (SSCB) * Advice to designated people on referrals to agencies * INSET training eg Ofsted requirements * Complete Sec 175 Audits with schools and additional learning environments * Attend MARAC - Multi Agency Risk Assessment conferences meetings, on behalf of schools * Provide support to schools in time of crisis * Advice to School Governors * Safer recruitment training 	Consultation via telephone or email	<p>Pam Gartland Education Safeguarding Manager Tel: 0191 5612252 Email: Pam.gartland@sunderland.gov.uk</p> <p>Anne Murton Deputy Education Safeguarding Manager Tel: 0191 5612253 Email: Anne.Murton@sunderland.gov.uk</p>	<p>Stannington Centre Stannington Grove Sunderland SR2 9JY</p>

INDEX	SERVICE NAME	LEAD AGENT	AGE RANGE	WHAT IT DOES	CURRENT ACCESS ROUTE	CONTACT	LOCATION OF CONTACT PERSON AND / OR SERVICE
Safeguarding	Kaleidoscope	NSPCC	up to 18	Assessment and treatment services for Children and Young People who display sexually harmful behaviour. Consultation and training to single and multi agency staff is also provided.	Consultation via telephone	Jane Scott, Acting Children's Services Manager or Duty Officer Tel 0191 5164600	Kaleidoscope 172 Newcastle Road, Sunderland, SR5 1NW
Safeguarding	Out of Hours Emergency Safeguarding Service	Safeguarding Children's Services	Pre birth - 18yrs	Provides emergency information, advice and Intervention	Consultation via telephone	Citywide Manager Lynne Goldsmith Tel: 0191 5531991 5.15pm – 8.30am Monday – Thursday Friday 4.45pm – 8.30am Monday	Cassaton House Fawcett Street Sunderland SR1 1RF
Special Educational Needs	Accessibility and Disability Equality Duty	Children's Services Sunderland City Council	2-19	Increase accessibility across the city in accordance with Part 4 of the DDA and Part 5A of the DDA	Consultation via telephone	Ian Stephenson Tel 0191 5612285 Email ian.stephenson@sunderland.gov.uk	SEN Unit Stannington Centre, Stannington Grove, Sunderland SR2 9JY

INDEX	SERVICE NAME	LEAD AGENT	AGE RANGE	WHAT IT DOES	CURRENT ACCESS ROUTE	CONTACT	LOCATION OF CONTACT PERSON AND / OR SERVICE
Special Educational Needs	Home & Hospital Tuition	Children's Services Sunderland City Council	5-16	Provides home & hospital tuition for pupils unable to attend school for medical reasons	Integrated Services Referral Panel	Lynn Fletcher Principal Educational Psychologist Tel 0191 5612216 Email: Lynn.fletcher@sunderland.gov.uk	Carley Hill Education Centre Emsworth Road Carley Hill Sunderland
Special Educational Needs	Home to School Transport	Children's Services Sunderland City Council	2-19	Make appropriate arrangements for Home to School Transport for those pupil eligible through legislation or the City of Sunderland Home to School Transport Policy	Either as a result of the statementing process or parents can complete an application form	Paul Tomlin Tel 0191 5612284 Email paul.tomlin@sunderland.gov.uk	SEN Unit Stannington Centre, Stannington Grove, Sunderland SR2 9JY
Special Educational Needs	Parent Partnership Service	Children's Services Sunderland City Council	0-19	Impartial support and information for Parents/Carers with children who have Special Educational Needs	Consultation via telephone or email	Ros Watt Tel 0191 5612295 Email ros.watt@sunderland.gov.uk	Stannington Centre Moving to Carley Hill Autumn 2009

INDEX	SERVICE NAME	LEAD AGENT	AGE RANGE	WHAT IT DOES	CURRENT ACCESS ROUTE	CONTACT	LOCATION OF CONTACT PERSON AND / OR SERVICE
Special Educational Needs	Returners Unit	Children's Services Sunderland City Council	11-16	Supports the reintegration and education of vulnerable young people suffering from psychological conditions which create phobia	Integrated Services Referral Panel	Lynn Fletcher Principal Educational Psychologist Tel 0191 5612216 Email: Lynn.fletcher@sunderland.gov.uk	Sandhill View School Grindon Lane Sunderland SR3 4EN
Special Educational Needs	Statutory Assessment of SEN	SEN Unit Children's Services Sunderland City Council	2-19	Carry out statutory assessment of special educational needs. Write statements of special educational needs where appropriate. Review statements annually and amend where appropriate.	Written referral	Margaret Watson Tel 0191 5612232 Email: Margaret.watson1@sunderland.gov.uk	SEN Unit Stannington Centre, Stannington Grove, Sunderland SR2 9JY
Special Needs	Deaf Friendly Coaching Programme	SAFC Foundation	6-16	Programmes are tailored to school and pupil needs	Telephone to discuss requirements and costs	Kevin Darke Tel 0191 5515316	Crowtree Leisure Centre Crowtree Road Sunderland SR1 3EL

INDEX	SERVICE NAME	LEAD AGENT	AGE RANGE	WHAT IT DOES	CURRENT ACCESS ROUTE	CONTACT	LOCATION OF CONTACT PERSON AND / OR SERVICE
Special Needs	Football Leagues and Tournaments	SAFC Foundation	11-16	<p>* Leagues for KS3 & KS4 pupils on alternate Fridays.</p> <p>* Available to pupils with Learning Difficulties, Emotional Behavioural Disorder or are within a Pupil Referral Unit or Exclusion Unit.</p> <p>* Players are selected from Years 7,8 and 9 for the KS3 League and from Years 10 and 11 for the KS4 League.</p> <p>* Programmes are tailored to school and pupil needs</p>	Telephone to discuss requirements and costs	Kevin Darke Tel 0191 5515316	Washington Millenium Centre Community Library The Oval Concord Washington NE37 2QD
Special Needs	Sign Language Programme	SAFC Foundation	0-19	Programmes are tailored to school and pupil needs	Telephone to discuss requirements and costs	Ryan Williams Tel 0191 5515316	Stadium of Light Sunderland SR5 1SU

INDEX	SERVICE NAME	LEAD AGENT	AGE RANGE	WHAT IT DOES	CURRENT ACCESS ROUTE	CONTACT	LOCATION OF CONTACT PERSON AND / OR SERVICE
Special Needs	Sports Programmes	SAFC Foundation	4-18	<p>* Programmes for pupils with disabilities - autism, aspergers & global learning difficulties to experience sporting activities and improve social skills.</p> <p>* Early Moves for Reception to Year 2. Basic Moves for Year 3 to Year 9. Advanced Moves for Year 9 and above.</p> <p>* Multi sports sessions are open to anyone.</p> <p>* Dinner time football clubs and afterschool clubs are open to anyone.</p> <p>* Holiday activities, sports days and events can be delivered to anyone.</p> <p>* Programmes are tailored to school and pupil needs</p>	Telephone to discuss requirements and costs	Kevin Darke Tel 0191 5515316	Stadium of Light Sunderland SR5 1SU

INDEX	SERVICE NAME	LEAD AGENT	AGE RANGE	WHAT IT DOES	CURRENT ACCESS ROUTE	CONTACT	LOCATION OF CONTACT PERSON AND / OR SERVICE
Sports Programmes	Football Development	SAFC Foundation	3-16	<ul style="list-style-type: none"> * Bespoke football & multi-sport sessions linked to PE curriculum and including After school coaching (open access) * Evening courses (open access) * Holiday courses (open access) * Saturday Morning Clubs (open access) * Soccer clinics (invite only) Matchday experiences 	Contact via telephone for costings	Jamie Wright Tel 0191 5515308	Stadium of Light Sunderland SR5 1SU

INDEX	SERVICE NAME	LEAD AGENT	AGE RANGE	WHAT IT DOES	CURRENT ACCESS ROUTE	CONTACT	LOCATION OF CONTACT PERSON AND / OR SERVICE
Sports Programmes	KICKZ	SAFC Foundation	11-16	<p>Targeted support for identified pupils at Thornhill and Southmoor Schools.</p> <p>* Anger and conflict resolution courses to years 7-11.</p> <p>* Junior sports Leaders Award for those aged 14+</p> <p>* Courses run from 6 weeks to 15 weeks - usually 2 hrs per week</p>	Consultation via telephone	<p>Ed Cook or Dawn Faulkner</p> <p>Tel 0191 5515091</p>	Stadium of Light Sunderland SR5 1SU
Sports Programmes	Playing for Success	SAFC Foundation	9-13	Ten week programme that aims to improve Literacy, numeracy & IT Skills. (DCSF approved)	Contact via telephone for costings	<p>Joseph Puech Playing for Success Manager</p> <p>Tel 0191 5618825</p> <p>Email: Joe.Peuch@sunderland.gov.uk</p>	Stadium of Light Sunderland SR5 1SU

INDEX	SERVICE NAME	LEAD AGENT	AGE RANGE	WHAT IT DOES	CURRENT ACCESS ROUTE	CONTACT	LOCATION OF CONTACT PERSON AND / OR SERVICE
Substance Misuse	Youth Drug and Alcohol Project (YDAP)	Sunderland City Council	4-25	<p>Offers specialist services for young people with drug and alcohol problems in Sunderland. The service works with young people in a holistic way, addressing all their needs, not only their issues regarding their use of substances. It includes:-</p> <ul style="list-style-type: none"> * One to one key working * Talking therapies * Advice and information * Harm minimisation and support 	CAF	<p>Lisa Wood</p> <p>Tel 0191 5663159 or Tel 0191 5663151</p> <p>Or visit the YDAP website for more information</p> <p>www.ydap.co.uk</p>	11 John Street Sunderland SR1 1HT
Young Carers	Young Carers Advice	Sunderland Carers Centre	4-25	Support and activities for young carers looking after a family member	Consultation via telephone	<p>Ailsa Martin</p> <p>Tel 0191 5673232</p>	Sunderland Carer's Centre 12 Toward Road Sunderland

INDEX	SERVICE NAME	LEAD AGENT	AGE RANGE	WHAT IT DOES	CURRENT ACCESS ROUTE	CONTACT	LOCATION OF CONTACT PERSON AND / OR SERVICE
Youth Services	Youth Services, Activities and Youth Clubs	City of Sunderland, Schools & Voluntary Sector	4-25	Provision of social and leisure activities, outreach work, holiday programmes, alternative education programmes, issue based sessions eg sexual health, includes groups for those with special needs	Consultation via telephone	Visit the Lets Go website for more information www.letsgosunderland.com Or contact:- The Youth Development Group Award Centre 270a Hylton Road Sunderland SR4 6XJ Tel 01915537406	Visit the Lets Go website www.letsgosunderland.com

Links to other useful websites:

CAF and LP guidance

The refreshed **CAF and LP guidance** is now available. This contains the updated CAF form, information about subject access requests, and a closer alignment to National eCAF.

The guidance can be downloaded from the link below:

<http://www.cwdcouncil.org.uk/integrated-working/integrated-working-guidance>

CAF form

The **CAF form** itself was updated in Feb 2010 and this form should be used with immediate effect. This includes a new statement on information storage, and has 'mandatory' fields to align with National eCAF.

There are multiple versions of the form (Word, PDF) and you can download them from the link below:

<http://www.dcsf.gov.uk/everychildmatters/resources-and-practice/TP00004/>